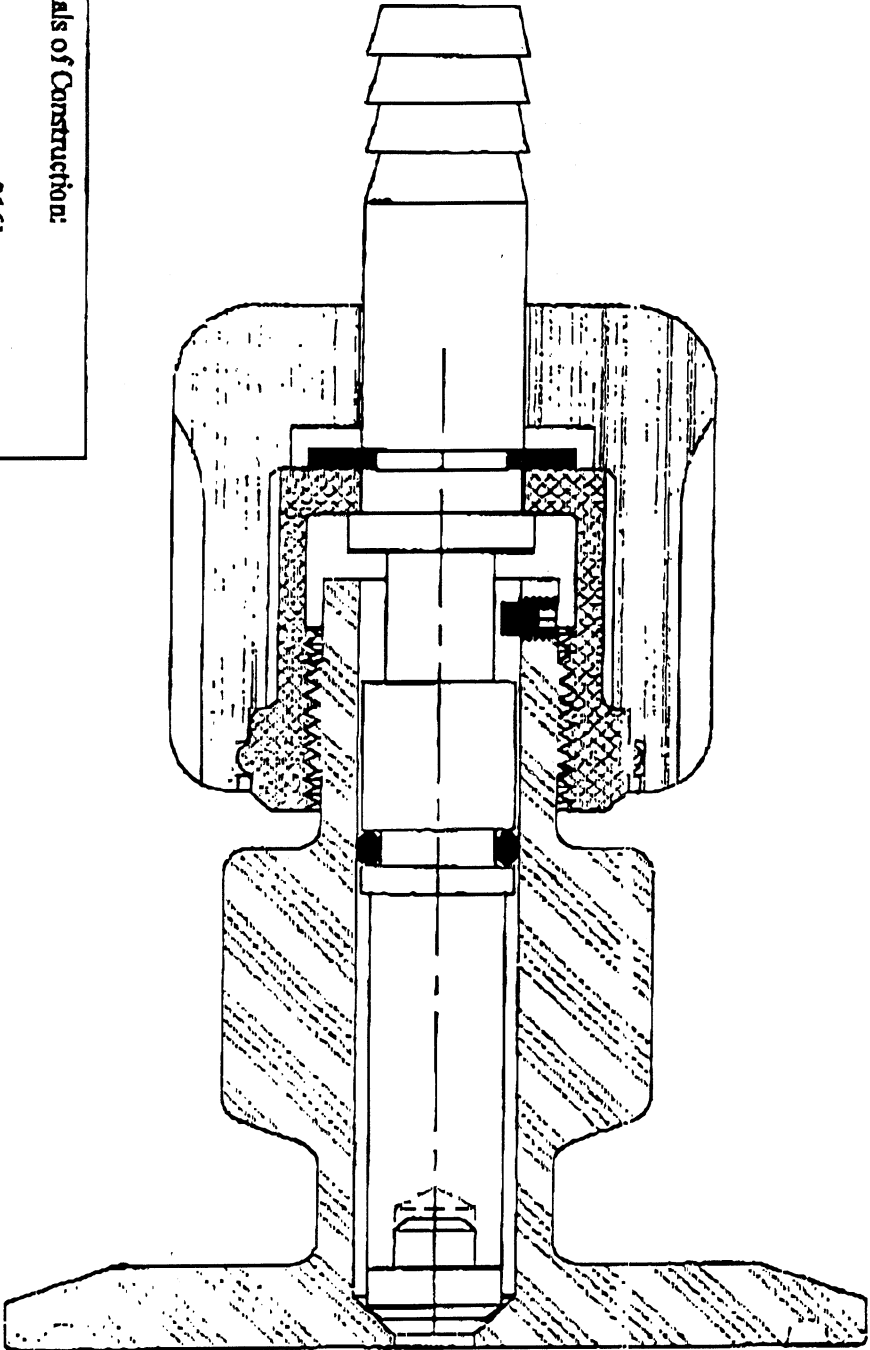


APPROVAL	DATE
CUSTOMER	USE OF



Materials of Construction:

- Body: 316Lss
- Stem: 316Lss
- Clip: 316ss
- Handle/wheel: Teflon (autoclavable)
- Nut: Monel (door-galling)
- O-ring: Viton
- Seat: Teflon

THIS VALVE OPERATES AT 150 PSI MAXIMUM PRESSURE. EXCEEDING THIS PRESSURE MAY CAUSE LEAKAGE OR FAILURE OF THE VALVE. ALL DIMENSIONS MUST BE CONSIDERED. THERE ARE NO TOLERANCES. DO NOT SCALE.

PACKING
CUST. SPEC.

Casella Sales & Marketing, Inc.

INLINE

1" TC x 1/2" Barb